

# VEHICLE IDENTIFICATION

## 1964½-1973 MUSTANG IDENTIFICATION, WARRANTY PLATES, CERTIFICATION LABELS, AND SHELBY SERIAL NUMBERS

Mustangs have an eleven character identification number stamped in several locations on the car's chassis and body platform. For official vehicle identification, including title and registration purposes, the number is in one specific location each year. For the 1964½ through 1967 model years, the VIN (vehicle identification number) is stamped on the top upper flange of the left front fender apron. In 1968 only, it is stamped on an aluminum tab riveted to the instrument panel close to the windshield on the passenger side of the car, visible through the windshield, from the outside. In 1969 and subsequent years, the aluminum tab was logically relocated to the driver's side — still riveted to the instrument panel — and visible from the outside, through the windshield.

For the years 1964½-1969, a reverse-stamped Warranty Plate is riveted to the rear face of the driver's side door. At the point of original sale, a similar plate affixed to an owner's card was issued to the purchaser. In 1970 and subsequent years, the Warranty Plate was discontinued and a Vehicle Certification Label is used. This is a reverse printed, opaqued, clear vinyl label instead of the former metal plate.

The VIN also appears on the Warranty Plate, as well as the Vehicle Certification Label, but clearly states "Not For Title or Registration". The VIN is a composite alpha-numeric code for the model year, assembly plant, body serial or sales code #, engine, and consecutive unit number. Additional coded information contained on the plate or label — depending on model year — includes body type, exterior color, interior trim,

manufacture date, district code, axle and transmission codes.

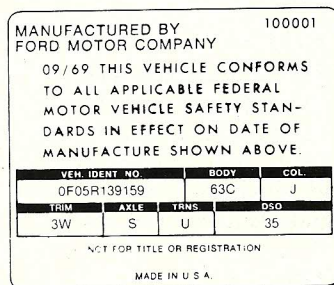
1965 through 1967 Shelys were manufactured at Ford's San Jose, California plant, with final assembly at Shelby American factory in Los Angeles. 1968 Shelys were manufactured in Metuchen, New Jersey, with final assembly in Ionia, Michigan, by the A.O. Smith Company. Complete manufacture and assembly of 1969 Shelys was at Ford's Dearborn, Michigan assembly plant. 1970 Shelys are simply left over '69 models which received minor cosmetic changes and had the first digit of their VIN changed from "9" to "0".

1965 through 1967 Shelby Mustangs have a serial number tag riveted atop the Ford VIN on the driver's side inner fender panel. In 1968 the Shelby serial number was a combination Ford VIN/Shelby serial number. The Shelby number is again riveted into the cutout area in the inner fender panel on a metal plate. The Ford VIN appears in the normal windshield position.

1965 through 1967 Shelby Mustangs did not receive warranty plates, but do have two holes punched in the rear of the driver's door, although never utilized by Shelby. The '68 Shelby got a regular warranty plate affixed to it's door for vehicle equipment data, but included "SPECIAL PERFORMANCE VEHICLE" stamped onto it, indicating a limited warranty was in effect. In 1969, the special Shelby serial plate no longer appears on the car's inner left fender and the cars are identified in the same method as other Mustangs. A special plate, however, was pop riveted just beneath the warranty plate, which read, "SHELBY AUTOMOTIVE".



Typical Mustang warranty or patent plate.



Typical Mustang certification label.

### ASSEMBLY PLANT CODES (Mustang and Shelby)

F	Dearborn, Mich.
R	San Jose, Ca.
T	Metuchen, N.J.

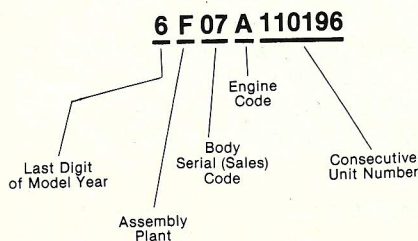
### BODY SERIAL OR SALES CODE BY BODY TYPE

CODE	1964½ — 1966	1967 — 1968	1969 — 1973
01		Hardtop	Hardtop
02		Fastback	SportsRoof
03		Convertible	Convertible
04			Grande
05			Mach 1
07	Hardtop		
08	Convertible		
09	Fastback		



Typical Shelby serial number plate.

### FORD VIN BREAKDOWN



# 1964½-1973 ENGINE CODES, INCLUDING SHELBY

CODE	1964½	1965	1966	1967	1968	1969	1970	1971	1972	1973
A		289-4V	289-4V	289-4V						
C		289-2V	289-2V	289-2V	289-2V			429-4V <sup>5</sup>		
D	289-4V low comp.									
F	260-2V				302-2V	302-2V	302-2V	302-2V	302-2V	302-2V
G						302-4V Boss <sup>4</sup>	302-4V Boss <sup>4</sup>			
H						351-2V	351-2V	351-2V	351-2V Ram Air	351-2V Ram Air
J					302-4V			429-4V <sup>5</sup> Ram Air		
K	289-4V <sup>3</sup> Hi-Perf.	289-4V <sup>3</sup> Hi-Perf.	289-4V <sup>3</sup> Hi-Perf.	289-4V <sup>3</sup> Hi-Perf.						
L						250-1V	250-1V	250-1V	250-1V	250-1V
M						351-4V	351-4V	351-4V		
Q						428-4V	428-4V	351-4V Ram Air	351-4V	351-4V
R					428-4V <sup>1</sup> Ram-Air	428-4V Ram Air	428-4V Ram Air	351-4V Boss <sup>4</sup>	351-4V HO <sup>6</sup>	
S				390-4V	390-4V 428-4V <sup>2</sup>	390-4V				
T		200-1V	200-1V	200-1V	200-1V	200-1V	200-1V			
U	170-1V									
X										
Y										
Z						429-4V Boss <sup>4</sup>	429-4V Boss <sup>4</sup>			
2				289-4V GT350						
4				428-8V GT500						
W					427-4V <sup>4</sup>					

<sup>1</sup> 1968 "R" Engine is used in '68½ Cobra Jet and GT500KR.

<sup>2</sup> 1968 "S" Engine is 390 in Mustang and 428 in Shelby.

<sup>3</sup> 1964½ — 1967 "K" Engine has mechanical lifters.

<sup>4</sup> All "BOSS" and "HO" Engines have mechanical lifters.

<sup>5</sup> 1971, 429CJ has hydraulic lifters, SCJ has mechanical lifters.

<sup>6</sup> 1972, 351 HO is like BOSS 351, but has lower compression ratio.

## BODYSTYLE CODES BY YEAR

	1965	1966	1967	1968	1969	1970	1971	1972	1973
63A	FB, S/I, Bu/St	FB, S/I, Bu/St	FB, S/I, Bu/St	FB, S/I, Bu/St	SR, S/I, Bu/St	SR, S/I, Bu/St	N/A	N/A	N/A
63B	FB, L/I, Bu/St	FB, L/I, Bu/St	FB, L/I, Bu/St	FB, L/I, Bu/St	SR, L/I, Bu/St	SR, L/I, Bu/St	N/A	N/A	N/A
63C	N/A	N/A	N/A	FB, S/I, Bn/St	Mach 1, * Bu/St	Mach 1, * Bu/St	N/A	N/A	N/A
63D	N/A	N/A	N/A	FB, L/I, Bn/St	N/A	N/A	SR, S/I, Bu/St	SR, S/I, Bu/St	SR, S/I, Bu/St
63R	N/A	N/A	N/A	N/A	N/A	N/A	Mach 1, , Bu/St	Mach 1, , Bu/St	Mach 1, , Bu/St
65A	HT, S/I, Bu/St	HT, S/I, Bu/St	HT, S/I, Bu/St	HT, S/I, Bu/St	HT, S/I, Bu/St	HT, S/I, Bu/St	N/A	N/A	N/A
65B	HT, L/I, Bu/St	HT, L/I, Bu/St	HT, L/I, Bu/St	HT, L/I, Bu/St	HT, L/I, Bu/St	HT, L/I, Bu/St	N/A	N/A	N/A
65C	HT, S/I, Bn/St	HT, S/I, Bn/St	HT, S/I, Bn/St	HT, S/I, Bn/St	H/T, S/I, Bn/St	N/A	N/A	N/A	N/A
65D	N/A	N/A	N/A	HT, L/I, Bn/St	HT, L/I, Bn/St	N/A	HT, S/I, Bu/St	HT, S/I, Bu/St	HT, S/I, Bu/St
65E	N/A	N/A	N/A	N/A	Grande, * Bu/St	Grande, * Bu/St	N/A	N/A	N/A
65F	N/A	N/A	N/A	N/A	N/A	N/A	Grande, * Bu/St	Grande, * Bu/St	Grande, * Bu/St
76A	CV, S/I, Bu/St	CV, S/I, Bu/St	CV, S/I, Bu/St	CV, S/I, Bu/St	CV, S/I, Bu/St	CV, S/I, Bu/St	N/A	N/A	N/A
76B	CV, L/I, Bu/St	CV, L/I, Bu/St	CV, L/I, Bu/St	CV, L/I, Bu/St	CV, L/I, Bu/St	CV, L/I, Bu/St	N/A	N/A	N/A
76C	CV, S/I, Bn/St	CV, S/I, Bn/St	CV, S/I, Bn/St	N/A	N/A	N/A	N/A	N/A	N/A
76D	N/A	N/A	N/A	N/A	N/A	N/A	CV, S/I, Bu/St	CV, S/I, Bu/St	CV, S/I, Bu/St

Abbreviations: HT = Hardtop  
FB = Fastback  
CV = Convertible  
SR = SportsRoof

S/I = Standard Interior  
L/I = Luxury Interior  
Bu/St = Bucket Seats  
Bn/St = Bench Seat

N/A = Not Available

\* Interior unique to this model only

# 1964½-1973 INTERIOR TRIM CODES

## 1964½ Interior Trim

CODE	TRIM SCHEMES
42	White Vinyl w/Blue Appt.
45	White Vinyl w/Red Appt.
46	White Vinyl w/Black Appt.
48	White Vinyl w/Ivy Gold Appt.
49	White Vinyl w/Palomino Appt.
56	Black Vinyl & Cloth
82	Blue Vinyl w/Blue Appt.
85	Red Vinyl w/Red Appt.
86	Black Vinyl w/Black Appt.
89	Palomino Vinyl w/Palomino Appt.

## 1965 Interior Trim

CODE	TRIM SCHEMES
22	Blue Vinyl w/Blue Appt.
25	Red Vinyl w/Red Appt.
26	Black Vinyl w/Black Appt.
29	Ivy Gold w/Gold Appt.
26	Palomino Vinyl w/Palomino Appt.
D2	White w/Blue Appt.
D5	White w/Red Appt.
D6	White w/Black Appt.
D8	White w/Ivy Gold Appt.
D9	White w/Palomino Appt.
62	Blue and White Luxury
65	Red Luxury
66	Black Luxury
67	Aqua and White Luxury
68	Ivy Gold and White Luxury
69	Palomino Luxury
F2	White w/Blue Appt. Luxury
F5	White w/Red Appt. Luxury
F6	White w/Black Appt. Luxury
F7	White w/Aqua Appt. Luxury
F8	White w/Ivy Gold Appt. Luxury
F9	White w/Palomino Appt. Luxury
32	Blue Bench
35	Red Bench
36	Black Bench
39	Palomino Bench
76	Black Fabric and Vinyl
79	Palomino Fabric and Vinyl

## 1966 Interior Trim

CODE	TRIM SCHEMES
22	Blue w/Blue Appt.
25	Dk. Red w/Red Appt.
26	Black w/Blk. Appt.
27	Aqua w/Aqua Appt.
D2	Parchment w/Blue Appt.
D3	Parchment w/Burgundy Appt.
D4	Parchment w/Embergo Appt.
D6	Parchment w/Blk. Appt.
D7	Parchment w/Aqua Appt.
D8	Parchment w/Ivy Gold Appt.
D9	Parchment w/Palomino Appt.
62	Blue & White Lux. Int.
64	Embergo & Parchment Lux. Int.
65	Red Lux. Int.
66	Black Lux. Int.
67	Aqua & White Lux. Int.
68	Ivy Gold & White Lux. Int.
F2	Parchment w/Blue Appt. Lux. Int.
F3	Parchment w/Burgundy Appt. Lux. Int.
F4	Parchment w/Embergo Appt. Lux. Int.
F6	Parchment w/Blk. Appt. Lux. Int.
F7	Parchment w/Aqua Appt. Lux. Int.
F8	Parchment w/Ivy Gold Appt. Lux. Int.
F9	Parchment w/Palomino Appt. Lux. Int.
32	Blue Bench
35	Red Bench
36	Black Bench
C2	Parchment w/Blue Appt. Bench
C3	Parchment w/Burgundy Appt. Bench
C4	Parchment w/Embergo Appt. Bench
C6	Parchment w/Black Appt. Bench
C7	Parchment w/Aqua Appt. Bench
C8	Parchment w/Ivy Gold Appt. Bench
C9	Parchment w/Palomino Appt. Bench

## 1967 Interior Trim Codes

CODE	TRIM SCHEMES
2A	Black, Std. Buckets
2B	Blue, Std. Buckets
2D	Red, Std. Buckets
2F	Saddle Std. Buckets
2G	Ivy Gold, Std. Buckets
2K	Aqua, Std. Buckets
2U	Parchment, Std. Buckets
6A	Black, Luxury Buckets
6B	Blue, Luxury Buckets
6D	Red, Luxury Buckets
6F	Saddle, Luxury Buckets
6G	Ivy Gold, Luxury Buckets
6K	Aqua, Luxury Buckets
6U	Parchment, Luxury Buckets
4A	Black, Bench Seat
4U	Parchment, Bench Seat
7A	Black, Comfortweave Bkt.
7U	Parchment, Comfortweave Bkt.
5A	Black, Luxury Comfortweave
5U	Parchment, Luxury Comfortweave

## 1968 Interior Trim Codes

CODE	TRIM SCHEMES
2A, 6A*	Black, All Vinyl Buckets
2B, 6B*	Blue, All Vinyl Buckets
2D, 6D*	Dk. Red, All Vinyl Buckets
2F, 6F*	Saddle, All Vinyl Buckets
2G, 6G*	Ivy Gold, All Vinyl Buckets
2K, 6K*	Aqua, All Vinyl Buckets
2U, 6U*	Parchment, All Vinyl Buckets
2Y, 6Y*	Nugget Gold, All Vinyl Buckets
8A, 9A*	Black, Comfortweave Bench
8B, 9B*	Blue, Comfortweave Bench
8D, 9D*	Dk. Red, Comfortweave Bench
8U, 9U*	Parchment, Comfortweave Bench
7A, 5A*	Black, Comfortweave Buckets
7B, 5B*	Blue, Comfortweave Buckets
7D, 5D*	Dk. Red, Comfortweave Buckets
7U, 5U*	Parchment, Comfortweave Buckets

\*Used w/Decor Group

## 1969 Interior Trim Codes

CODE	TRIM SCHEMES
2A	Black, Vinyl Buckets
2B	Blue, Vinyl Buckets
2D	Red, Vinyl Buckets
2G	Ivy Gold, Vinyl Buckets
2Y	Nugget Gold, Vinyl Buckets
4A, DA*	Black, Com'weave Hi-Buckets
4D, DD*	Red, Com'weave Hi-Buckets
DW*	White, Com'weave Hi-Buckets
5A	Black, Com'weave Luxury
5B	Blue, Com'weave Luxury
5D	Red, Com'weave Luxury
5G	Ivy Gold, Com'weave Luxury
5W	White, Com'weave Luxury
5Y	Nugget Gold, Com'weave Luxury
6A, 9A*	Black, Com'weave Bench
6B, 9B*	Blue, Com'weave Bench
6D, 9D*	Red, Com'weave Bench
6Y, 9Y*	Nugget Gold, Com'weave Bench
7A	Black
7B	Blue, Conv. Deluxe Buckets
7D	Red, Conv. Deluxe Buckets
7G	Ivy Gold, Conv. Deluxe Buckets
7W	White, Conv. Deluxe Buckets
7Y	Nugget Gold, Conv. Deluxe Buckets
1A	Black, Luxury Cloth & Vinyl
1B	Blue, Luxury Cloth & Vinyl
1G	Ivy Gold, Luxury Cloth & Vinyl
1Y	Nugget Gold, Luxury Cloth & Vinyl
3A	Black, Mach 1 Knitted Vinyl
3D	Red, Mach 1 Knitted Vinyl
3W	White, Mach 1 Knitted Vinyl

\*Interior Decor Group

## 1970 Interior Trim Codes

CODE	TRIM SCHEMES
BA	Black, All Vinyl
BB	Blue, All Vinyl
BE	Vermillion, All Vinyl
BF	Ginger, All Vinyl
BG	Ivy, All Vinyl
BW	White, All Vinyl
EA	Black, Com'weave Vinyl
EB	Blue, Com'weave Vinyl
EG	Ivy, Com'weave Vinyl
EW	White, Com'weave Vinyl
TA	Black, Com'weave Vinyl
TB	Blue, Com'weave Vinyl
TG	Ivy, Com'weave Vinyl
TW	White, Com'weave Vinyl
UE	Vermillion, Blazer Stripe Cloth
UF	Ginger, Blazer Stripe Cloth
CE	Vermillion, Blazer Stripe Cloth
CF	Ginger, Blazer Stripe Cloth
AA	Black, Houndstooth Cloth & Vinyl
AB	Blue, Houndstooth Cloth & Vinyl
AE	Vermillion, Houndstooth Cloth & Vinyl
AF	Ginger, Houndstooth Cloth & Vinyl
AG	Ivy, Houndstooth Cloth & Vinyl
3A	Black, Mach 1 Knitted Vinyl
3B	Blue, Mach 1 Knitted Vinyl
3G	Ivy, Mach 1 Knitted Vinyl
3W	White, Mach 1 Knitted Vinyl
3E	Vermillion, Mach 1 Knitted Vinyl
3F	Ginger, Mach 1 Knitted Vinyl

## 1971 Interior Trim Codes

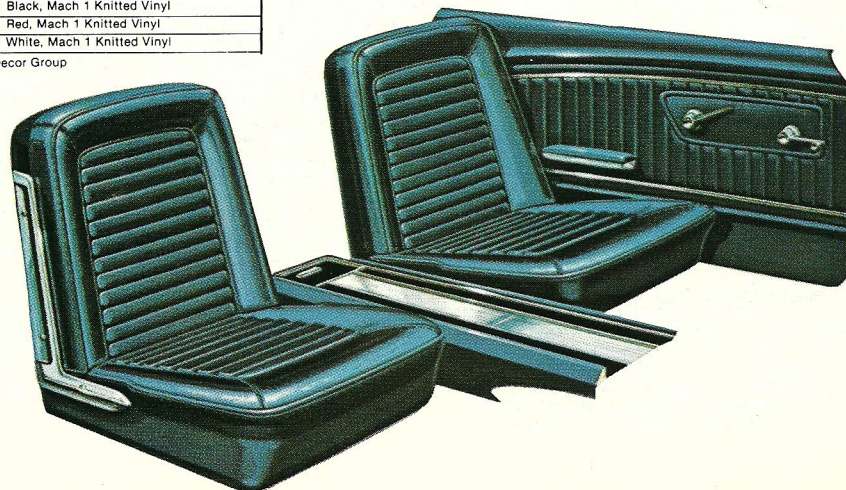
CODE	TRIM SCHEMES
1A	Black, All Vinyl
1B	Med. Blue, All Vinyl
1E	Vermillion, All Vinyl
1F	Med. Ginger, All Vinyl
1R	Med. Green, All Vinyl
1W	White, All Vinyl
3A	Black, Knitted Vinyl
3W	White, Knitted Vinyl
2E	Vermillion, Cloth & Vinyl
2F	Med. Ginger, Cloth & Vinyl
2B	Med. Blue, Cloth & Vinyl
2R	Med. Green, Cloth & Vinyl
5A	Black, Knitted Vinyl
5W	White, Knitted Vinyl
5E	Vermillion, Knitted Vinyl
5B	Med. Blue, Knitted Vinyl
5R	Med. Green, Knitted Vinyl
5F	Med. Ginger, Knitted Vinyl
CA	Black, Knitted Vinyl
CW	White, Knitted Vinyl
CE	Vermillion, Knitted Vinyl
CB	Med. Blue, Knitted Vinyl
CR	Med. Green, Knitted Vinyl
CF	Med. Ginger, Knitted Vinyl
4A	Black, Cloth & Vinyl
4B	Med. Blue, Cloth & Vinyl
4E	Vermillion, Cloth & Vinyl
4F	Med. Ginger, Cloth & Vinyl
4R	Med. Green, Cloth & Vinyl

## 1972 Interior Trim Codes

CODE	TRIM SCHEMES
4F	Med. Ginger, Cloth & Vinyl
4E	Vermillion, Cloth & Vinyl
4B	Med. Blue, Cloth & Vinyl
4R	Med. Green Cloth & Vinyl
4A	Black, Cloth & Vinyl
5B	Med. Blue, Knitted Vinyl
5A	Black, Knitted Vinyl
5E	Vermillion, Knitted Vinyl
5W	White, Knitted Vinyl
5R	Med. Green, Knitted Vinyl
5F	Med. Ginger, Knitted Vinyl
1E	Vermillion, All Vinyl
1W	White, All Vinyl
1A	Black, All Vinyl
1B	Med. Blue, All Vinyl
1R	Med. Green, All Vinyl
1F	Med. Ginger, All Vinyl
2E	Vermillion, Cloth & Vinyl
2F	Med. Ginger, Cloth & Vinyl
2B	Med. Blue, Cloth & Vinyl
2R	Med. Green, Cloth & Vinyl
CA	Black, Knitted Vinyl
CW	White, Knitted Vinyl
CE	Vermillion, Knitted Vinyl
CB	Med. Blue, Knitted Vinyl
CR	Med. Green, Knitted Vinyl
CF	Med. Ginger, Knitted Vinyl

## 1973 Interior Trim Codes

CODE	TRIM SCHEME
AA	Black, All Vinyl
AB	Med. Blue, All Vinyl
AF	Med. Ginger, All Vinyl
AG	Avocado, All Vinyl
AW	White, All Vinyl
CA	Black, Knitted Vinyl
CB	Med. Blue, Knitted Vinyl
CF	Med. Ginger, Knitted Vinyl
CG	Avocado, Knitted Vinyl
CW	White, Knitted Vinyl
FA	Black, Cloth & Vinyl
FB	Med. Blue, Cloth & Vinyl
FF	Med. Ginger, Cloth & Vinyl
FG	Avocado, Cloth & Vinyl
GA	Black, Mach 1, Knitted Vinyl
GB	Med. Blue, Mach 1, Knitted Vinyl
GF	Med. Ginger, Mach 1, Knitted Vinyl
GG	Avocado, Mach 1, Knitted Vinyl
GW	White, Mach 1, Knitted Vinyl



MONTH	CODE	
	1st Year	2nd Year
January	A	N
February	B	P
March	C	Q
April	D	R
May	E	S
June	F	T
July	G	U
August	H	V
September	J	W
October	K	X
November	L	Y
December	M	Z

**DATE CODE:** 1st two digits are the day of the month in which car was assembled. Letter denotes month in which car was assembled. For production year over 12 months, refer to 2nd year column. ie: 1964-65.

### TRANSMISSION CODES

CODE	1965	1966	1967	1968	1969	1970	1971	1972	1973
1	3-Spd. Man.	3-Spd. Man.	3-Spd. Man.	3-Spd. Man.	3-Spd. Man.	3-Spd. Man.	3-Spd. Man.	3-Spd. Man.	3-Spd. Man.
3			3-Spd. Man.						
5	4-Spd. Man.	4-Spd. Man.	4-Spd. Man.	4-Spd. Man.	4-Spd. Man.	4-Spd. Man.	4-Spd. Man.	4-Spd. Man.	4-Spd. Man.
6	C-4 Atm.	C-4 Atm.			4-Spd. Man.*	4-Spd. Man.*	4-Spd. Man.*		
E								4-Spd. Man.	4-Spd. Man.
U			C-6 Atm.	C-6 Atm.	C-6 Atm.	C-6 Atm.	C-6 Atm.	C-6 Atm.	C-6 Atm.
W			C-4 Atm.	C-4 Atm.	C-4 Atm.	C-4 Atm.	C-4 Atm.	C-4 Atm.	C-4 Atm.
X					FMX Atm.	FMX Atm.	FMX Atm.	FMX Atm.	FMX Atm.

\* Denotes close-ratio

### REAR AXLE RATIO CODE

CODE	1965	1966	1967	1968	1969	1970	1971	1972	1973
1	3.00:1	3.00:1	3.00:1	2.75:1	2.50:1				
2		2.83:1	2.83:1	2.79:1	2.75:1	2.75:1	2.75:1	2.75:1	2.75:1
3	3.20:1	3.20:1	3.20:1		2.79:1	2.79:1	2.79:1	2.79:1	2.79:1
4	3.25:1	3.25:1	3.25:1	2.83:1	2.80:1	2.80:1	2.80:1	2.80:1	
5	3.50:1	3.50:1	3.50:1	3.00:1	2.83:1	2.83:1			
6	2.80:1	2.80:1	2.80:1	3.20:1	3.00:1	3.00:1	3.00:1	3.00:1	3.00:1
7	3.80:1			3.25:1	3.10:1	3.10:1			3.40:1
8	3.89:1	3.89:1		3.50:1	3.20:1	3.20:1		3.18:1	
9	4.11:1			3.10:1	3.25:1	3.25:1	3.25:1	3.25:1	3.25:1
A	3.00:1*	3.00:1*	3.00:1*		3.50:1	3.50:1	3.50:1	3.50:1	3.50:1
B					3.07:1	3.07:1	3.07:1	3.07:1	
C	3.20:1*	3.20:1*	3.20:1*		3.08:1	3.08:1		3.55:1	
D	3.25:1*	3.25:1*	3.25:1*		3.91:1				
E	3.50:1*	3.50:1*	3.50:1*	3.00:1*	4.30:1				
F	2.80:1*	2.80:1*		3.20:1*		2.33:1			
G	3.80:1*			3.25:1*					3.55:1
H	3.89:1*	3.89:1*		3.50:1*				3.78:1	
I	4.11:1*								
J					2.50:1*				
K					2.75:1*	2.75:1*	2.75:1*	2.75:1*	2.75:1*
L		2.83:1*			2.79:1*				2.79:1*
M					2.80:1*	2.80:1*	2.80:1*	2.80:1*	
N					2.83:1*				
O or Ø					3.00:1*	3.00:1*	3.00:1*	3.00:1*	3.00:1*
P					3.10:1*				
Q					3.20:1*				
R					3.25:1*	3.25:1*	3.25:1*	3.25:1*	3.25:1*
S					3.50:1*	3.50:1*	3.50:1*	3.50:1*	3.50:1*
T					3.07:1*				
U					3.08:1*				
V					3.91:1*	3.91:1*	3.91:1*	3.91:1*	3.91:1*
W					4.30:1*	4.30:1*			
X						2.33:1*			
Y							4.11:1*		

\*Denotes locking differential

**MODELS CONSECUTIVELY NUMBERED TOGETHER:**

1965-1968	1969	1970	1971	1972-1973
Falcon	Ford	Ford	Ford	Ford
Fairlane	Fairlane	Falcon	Torino	Torino
Mustang	Falcon	Fairlane	Maverick	Maverick
	Mustang	Mustang	Mustang	Mustang
	T-Bird	T-Bird	T-Bird	T-Bird
		Maverick		Pinto

**CONSECUTIVE UNIT NUMBER**

Each model year, each assembly plant began production with the number 100,001 for the models listed at right. Consecutive numbering continued for models listed in these categories, regardless of model or type, throughout the production.



# 1964 1/2 - 1973 MUSTANG EXTERIOR PAINT CODES

	1964 1/2	1965	1966	1967	1968	1969	1970	1971	1972	1973
<b>A or 9A</b>	Raven Black	Raven Black	Raven Black	Raven Black	Raven Black	Raven Black	Raven Black	Raven Black	Wimbledon White	Wimbledon White
<b>B or 2B</b>	Pagoda Green	Midnight Turquoise	---	Frost Turquoise	Royal Maroon	Royal Maroon	---	Maroon Metallic	Bright Red	Bright Red
<b>C or 6C</b>	---	Honey Gold	---	---	---	Black Jade	Dk. Ivy Green Met.	Dk. Ivy Green Met.	Med. Yellow Gold	Medium Yellow Gold
<b>D or 3D</b>	Dynasty Green	Dynasty Green	---	Acapulco Blue	Acapulco Blue	Acapulco Blue	Yellow	Grabber Yellow	---	Med. Blue Metallic
<b>E or 4E</b>	---	---	---	---	---	Aztec Aqua	---	Yellow Gold	Bright Lime	---
<b>F or 3F</b>	Guardsmen Blue	---	Light Blue	Arcadian Blue	Gulfstream Aqua	Gulfstream Aqua	---	---	Grabber Blue	---
<b>G</b>	---	---	---	---	---	---	Med. Lime Metallic	---	---	---
<b>H or 5H</b>	Caspian Blue	Caspian Blue	Sahara Beige	Diamond Green	---	---	---	---	Med. Brown Metallic	Med. Brown Metallic
<b>I</b>	---	Champagne Beige	---	Lime Gold	Lime Gold	Lime Gold	---	Grabber Lime	---	---
<b>J, 3J, J9</b>	Rangoon Red	Rangoon Red	---	---	---	---	Grabber Blue	Grabber Blue	Brt. Blue Metallic	---
<b>K or 3K</b>	Silversmoke Gray	Silversmoke Gray	Nightmist Blue	Nightmist Blue	---	---	Bright Gold Metallic	---	---	Blue Glow
<b>L</b>	---	---	---	---	---	---	---	---	---	---
<b>M or 5M</b>	Wimbledon White	Wimbledon White	Wimbledon White	Wimbledon White	Wimbledon White	Wimbledon White	Wimbledon White	Wimbledon White	---	Medium Copper Met.
<b>N or 4N</b>	---	---	---	Diamond Blue	Diamond Blue	---	Pastel Blue	Pastel Blue	---	Medium Aqua
<b>O</b>	---	Tropical Turquoise	---	---	Seafoam Green	---	---	---	---	---
<b>P or 4P</b>	Prairie Bronze	Prairie Bronze	Antique Bronze	---	---	Winter Blue	---	Med. Green Metallic	Med. Green Metallic	Med. Green Metallic
<b>Q or 4Q</b>	---	---	Brittany Blue	Brittany Blue	Brittany Blue	---	Med. Blue Metallic	---	Dark Green Metallic	Dark Green Metallic
<b>R</b>	---	Ivy Green	Dark Green Metallic	---	Highland Green	---	---	---	---	---
<b>S</b>	Cascade Green	---	---	Dusk Rose	---	Champagne Gold	Med. Gold Metallic	---	---	---
<b>T or 5T</b>	---	---	Candyapple Red	Candyapple Red	Candyapple Red	Candyapple Red	Red	---	---	Saddle Bronze Met.
<b>U or U9</b>	---	---	Tahoe Turquoise	---	Tahoe Turquoise	---	Grabber Orange	---	---	---
<b>V</b>	Sunlight Yellow	Sunlight Yellow	Emberglo	Burnt Amber	---	---	---	Light Pewter Met.	---	---
<b>W</b>	---	---	---	Clearwater Aqua	Meadowlark Yellow	Meadowlark Yellow	---	---	---	---
<b>X</b>	Vintage Burgundy	Vintage Burgundy	Vintage Burgundy	Vintage Burgundy	Presidential Blue	---	---	---	---	---
<b>Y</b>	Skylight Blue	Silver Blue	Silver Blue	Dark Moss Green	Sunlit Gold	Indian Fire	---	---	---	---
<b>Z or Z9</b>	Chantilly Beige	---	Med. Sage Metallic	Sauterne Gold	---	---	Grabber Green	Grabber Green	---	---
<b>1</b>	---	---	---	---	---	---	Calypso Coral	---	---	---
<b>2 or 2J</b>	---	---	---	---	---	Lime	Light Ivy Yellow	---	Maroon	---
<b>3 or 3B</b>	Poppy Red	Poppy Red	---	---	---	Calypso Coral	---	Bright Red	Light Blue	Light Blue
<b>4 or 4F</b>	---	---	Silver Frost	Silver Frost	---	Silver Jade	---	---	Med. Lime Metallic	---
<b>5 or 5A</b>	Twilight Turquoise	---	Signalflare Red	---	---	---	---	Medium Brown Met.	Lt. Pewter Metallic	---
<b>6 or 6E</b>	---	---	---	Pebble Beige	Pebble Beige	Pastel Gray	Silver Blue Metallic	Silver Blue Metallic	Med. Bright Yellow	Med. Bright Yellow
<b>7</b>	Phoenician Yellow	---	---	---	---	---	---	---	---	---
<b>8</b>	---	Springtime Yellow	Springtime Yellow	Springtime Yellow	---	---	---	Light Gold	---	---
<b>SPECIAL</b>	---	---	Med. Palomino Metallic	Playboy Pink	---	---	---	Gold Metallic	6F Gold Glow	4C Ivy Glow
<b>SPECIAL</b>	---	---	Med. Silver Metallic	Anniversary Gold	---	---	---	Gold Glamour	4C Ivy Glow	Brt. Green Gold Met. 4B
<b>SPECIAL</b>	---	---	Ivy Green Metallic	Columbine Blue	---	---	---	---	---	6F Gold Glow
<b>SPECIAL</b>	---	---	Tahoe Turq. Metallic	Aspen Gold	---	---	---	---	---	---
<b>SPECIAL</b>	---	---	Maroon Metallic	Blue Bonnet	---	---	---	---	---	---
<b>SPECIAL</b>	---	---	Silver Blue Metallic	Timberline Green	---	---	---	---	---	---
<b>SPECIAL</b>	---	---	Sauterne Gold Met.	Lavender	---	---	---	---	---	---
<b>SPECIAL</b>	---	---	Light Beige	Bright Red	---	---	---	---	---	---

# 1965-1970 SHELBY SERIAL # VIN BREAKDOWN\*

## (DSO) DISTRICT CODE

A two digit code number for the district which ordered the car. Foreign Special Orders will have a complete order number in this space.

DISTRICT	1964 thru 1966	1967 thru 1968	1969 thru 1971	1972	1973
Boston	11				→
Buffalo	12	37			→ 12
New York	13				→
Pittsburgh	14	38			→ 14
Newark	15				→
Atlanta	21				→
Charlotte	22				→
Philadelphia	23	16			→
Jacksonville	24				→
Richmond	25				→
Washington	26	17			→
Cincinnati	31	27	47		→
Cleveland	32			42	→
Detroit	33			48	→
Indianapolis	34		46		→
Lansing	35			45	→
Louisville	36	28			→
Chicago	41				→
Fargo	42				→
Rockford	43				→
Twin Cities	44			58	→
Davenport	45		56		→
Denver	51			76	→
Des Moines	52				→
Kansas City	53				→
Omaha	54				→
St. Louis	55				→
Dallas	61			52	→
Houston	62			57	→
Memphis	63			23	→
New Orleans	64			26	→
Oklahoma City	65				→
Los Angeles	71				→
San Jose	72				→
Salt Lake City	73				→
Seattle	74				→
Milwaukee	---	43			→
Phoenix	---	75			→
Body Company	---	---	87		→
Ford Of Canada	81				→
Government	83				→
Home Office Reserve	84				→
American Red Cross	85				→
Transportation Services	89				→
Export	90-99				→

### 1965 SHELBY VIN BREAKDOWN

SFM 5 S 123  
 — Shelby Ford Mustang  
 — year: 1965  
 — Street (S) or Race car (R)\*  
 — consecutive Shelby production number  
 for that model year; starts with 001  
 and ends with 562

### 1966 SHELBY VIN BREAKDOWN

SFM 6 S 123  
 — Shelby Ford Mustang  
 — year: 1966  
 — street cars (no competition models were  
 built in 1966)  
 — consecutive Shelby production number  
 for that model year; starts with 001  
 and ends with 2380.

### 1967 SHELBY VIN BREAKDOWN

67 2 0 0 F 5 A 01234  
 — year: 1967  
 — engine:  
 2 = GT350 289  
 4 = GT500 428  
 — transmission:  
 0 = 4-speed  
 1 = automatic  
 — components:  
 0 = none (base vehicle)  
 1 = air conditioning  
 2 = thermactor exhaust system  
 3 = air conditioning and thermactor  
 — body style: fastback  
 — exterior color:  
 1 = bronze 6 = dark metallic gray  
 2 = dark blue 7 = lime green  
 3 = black 8 = medium blue  
 4 = white 9 = red  
 5 = dark green  
 — interior:  
 A = black  
 U = parchment  
 — consecutive Shelby production  
 number for that model year;  
 starts with 00001 and ends with  
 03225

### 1968 SHELBY VIN BREAKDOWN

8 T 02 J 123456-00001  
 — same as Ford VIN  
 — consecutive number of Shelby pro-  
 duction; begins with 00001 and  
 ends with 04450.

### 1969-1970 FORD/SHELBY VIN BREAKDOWN

9 F 02 R 48 0123  
 — year: 1969  
 — Ford assembly plant: F = Dearborn,  
 Michigan (all 1969 Shelys were built  
 in Dearborn)  
 — body style: 02 = fastback; 03 = conver-  
 tible  
 — engine: M = 351 (GT350)  
 R = 428 CJ (GT500)  
 — 48 = Shelby code (all '69-'70 Shelys  
 carried this "48" and no other Mus-  
 tangs did; a car must have this num-  
 ber to be a Shelby)  
 — consecutive production number; begins  
 with 0001; last car produced has not  
 been established at this time, is cur-  
 rently thought to be around 3300.

0 F 03 M 48 2345  
 — year: 1970  
 — assembly plant: F = Dearborn (all cars)  
 — body style: 02 = fastback; 03 = conver-  
 tible  
 — engine: M = 351 (GT350)  
 R = 428 CJ (GT500)  
 — 48 = Shelby code (all cars)  
 — consecutive production number (inter-  
 spersed with 1969 models).

\*All above VIN information taken from the "SHELBY  
BUYER'S GUIDE" written by Richard J. Kopec.